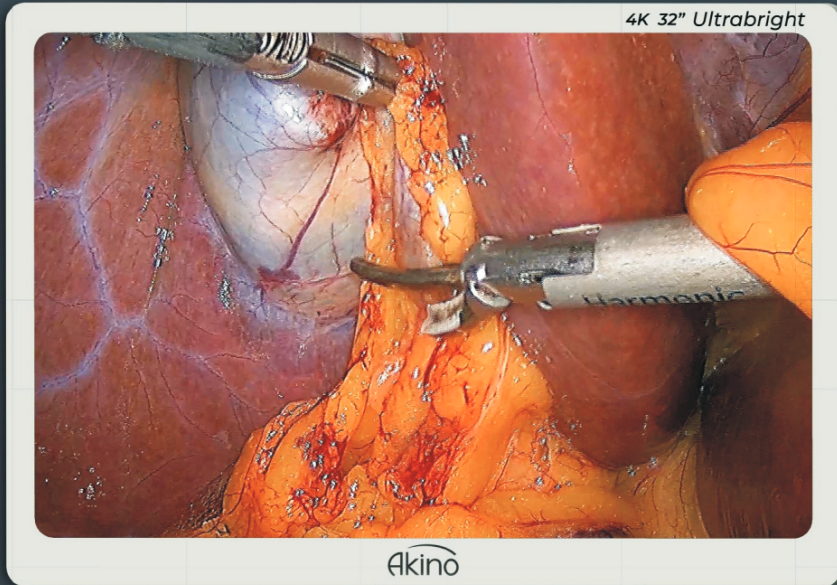


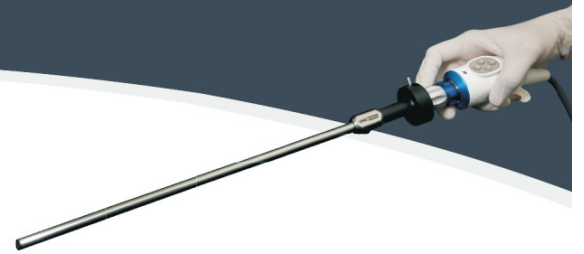
JAPANESE TECHNOLOGY

4K

Akino  
Surgery Simplified  
Japan • Singapore



4K 32" Ultrabright

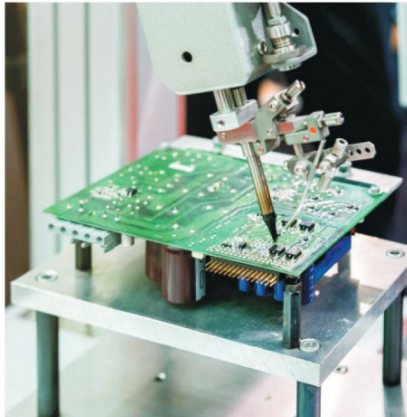


ERATO 4

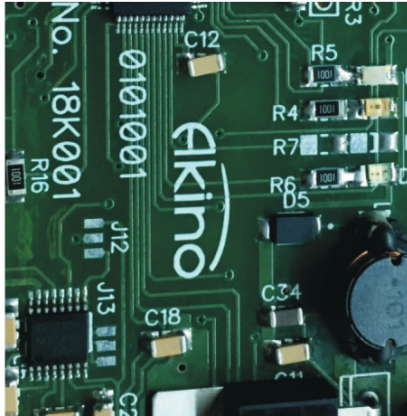


**JAPANESE TECHNOLOGY**

Akino Medical Pte Ltd manufactures innovative Endoscopy vision Systems covering all technology platforms right from 2 MP vision to 12 MP 3D cameras to cover requirements of simple to very advanced Endoscopic surgeries.



Akino visualisation systems are designed in Japan. Critical electronic boards are made in Japan & finally assembled in its Singapore factory. Singapore is strategically chosen as factory location due to its proximity to Asia pacific, Middle East and European markets. Akino strengths lie in developing latest vision systems that uses Integrated CMOS platform, more advanced than older generation CMOS.



**INTEGRATED CMOS**

AKINO CAMERAS ARE BASED ON INTEGRATED CMOS PLATFORM THAT HAS IMPROVED LAST GENERATION CMOS TECHNOLOGY THROUGH ALGORITHMS & SOFTWARES DEVELOPED IN ITS OWN R & D DEPARTMENT

## Erato 4K Console



**4K RESOLUTION - 3840X2160P  
AT 60 FRAMES PER SECOND  
INTEGRATED CMOS PLATFORM** +

**HDMI 2.0 - 4K OUTPUT  
HDMI 2.0 CAN TRANSFER IMAGE AT 18 GBPS** +

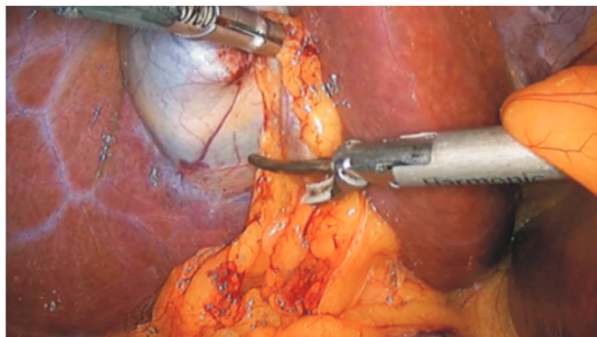
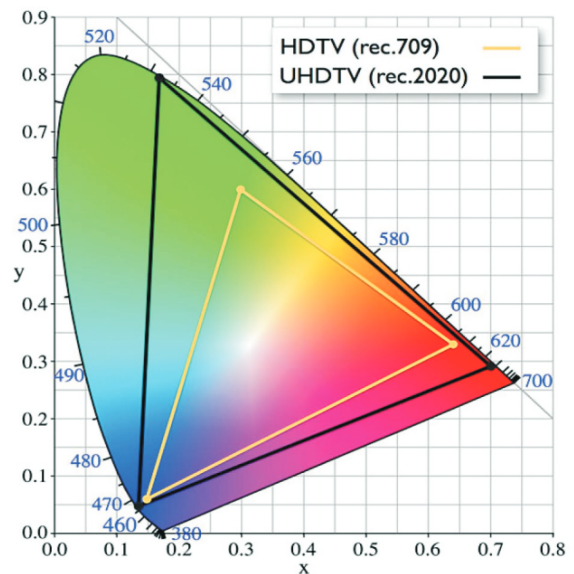
**ADDITIONAL SIMULTANEOUS  
3G SDI - FULL HD OUTPUT  
OT INTEGRATION FRIENDLY** +

**ETHERNET OUTPUT FOR NETWORK  
TRANSFER** +

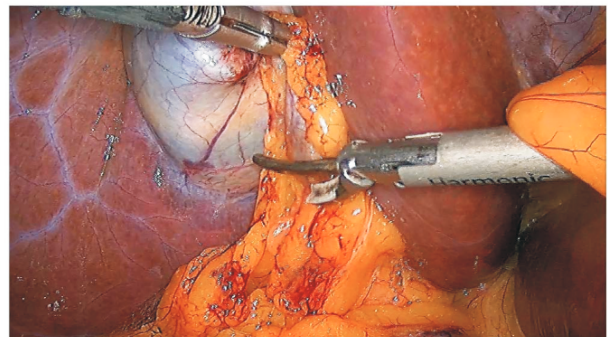
### ADDITIONAL FEATURES

- + Dual Vimage mode for malignant tissue detection
- + Hi res mode for unbelievable clarity
- + Built in FHD recording
- + Better colour rendition due to \*BT. 2020 compliance  
(\*BT.2020 is set of Specifications Covering various aspects of video broad casting which the International Telecommunication union recommends as Standard For UHD Projections.)

4K as per BT : 2020



High Res OFF



High Res ON

## Erato 4 Camera Head

OPTICAL ZOOM



“4K Integrated CMOS Platform that enables you Fiber by Fiber Dissection With Minimized Bleeding”.



4 BUTTONS ON HEAD FOR  
8 FUNCTIONS - MORE USER FRIENDLY



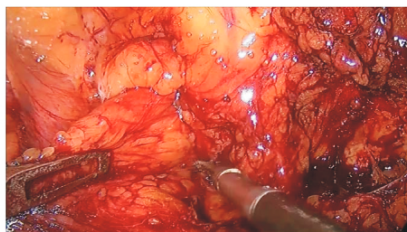
BOTH OPTICAL & DIGITAL ZOOM



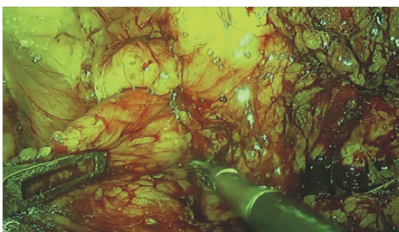
LIGHT WEIGHT ERGONOMIC HEAD



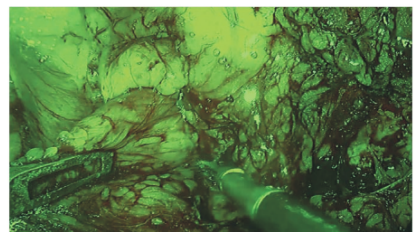
MENU FOR PERSONALISED SETTINGS



Vimage off



Vimage 1



Vimage 2

# 4K MEDICAL GRADE MONITORS

55", 32" & 27" 4K Monitor

3840 X 21609 INPUT +

BT.2020 COMPATIBLE FOR BETTER COLOUR ACCURACY NEARER TO HUMAN EYES +

MULTIMODALITY QUADVIEW POP THROUGH 4DIFFERENT INPUTS +



## ADDITIONAL FEATURES

- + Available in 27", 32" & 55" Monitors
- + PIP modes
- + Input - 4K HDMI, 3G SDI, DVI-D, Display port
- + Advanced image processing algorithms
- + Support high dynamic range
- + Picture in picture & Picture by picture

SIZE	27"	32"	55"
<b>Display Technology</b>	TFT/IPS, LED Backlight	TFT/IPS, LED Backlight	TFT/IPS, LED Backlight
<b>Colour Gammut</b>	BT 2020	BT 2020	BT 2020
<b>Contrast ratio</b>	1500:1	1300:1	1100:1
<b>Resolution 4K</b>	3840 X 2160	3840 X 2160	3840 X 2160
<b>4K Inputs</b>	1 X DP 1.2, 1 X HDMI 2.0	1 X DP 1.2, 1 X HDMI 2.0	1 X DP 1.1, 2 X HDMI 2.0
<b>Full HD inputs</b>	1 X DP, 1X3G SDI, 1 X DVI	1 X DP, 1X3G SDI, 1 X DVI	1 X 3G SDI, 1 X DVI
<b>Output format</b>	1 X DVI, 1 X 3G SDI	1 X DVI, 1 X 3G SDI	1 X DVI, 1 X 3G SDI
<b>PIP / PBP</b>	PIP / PBP	PIP / PBP	PIP / PBP
<b>Image rotation &amp; flip</b>	Available	Available	Available
<b>Dimensions (WxHxD)</b>	654 X 411 X 58 mm	883 X 599 X 200 mm	1259 X 733 X 87 mm
<b>Certification</b>	CE, UL-US, BIS	CE, UL-US, BIS	CE, UL-US, BIS
<b>Viewing Angle</b>	178°(V) / 178°(H)	178°(V) / 178°(H)	178°(V) / 178°(H)
<b>Brightness</b>	800 cd/m <sup>2</sup>	800 cd/m <sup>2</sup>	500 cd/m <sup>2</sup>
<b>Weight</b>	7.7 Kg	13.5 Kg	24 Kg
<b>Art no :</b>	M02D. 274K	M02D. 324K	M02D. 554K

# UHD ENDOSCOPES

## 4K Camera Compatible

### UHD Laparoscopes



#### ADDITIONAL FEATURES

- + Highest optical resolution to match 4K camera
- + Triple tube design, laser welded joints, sapphire tips
- + Excellent clarity even at the corners of big screen 4K monitors
- + Available in 0°, 30° & 45° direction of view

### 4K (UHD) Sinusscopes



#### ADDITIONAL FEATURES

- + Multicoated optical system
- + High Magnification UHD optics
- + High contrast image even at periphery
- + Laser welded joints for longer life
- + Sapphire tips for scratch resistance
- + Available in 0°, 30° & 45° direction of view
- + Wide angle view
- + Glass cone for optimised illumination

### HD Hysteroscopes / Cystoscopes - 4mm, 2.9mm



#### ADDITIONAL FEATURES

- + HM HD optics
- + Laser welded joints
- + Sapphire tip for long life
- + High transmission ratio for uniform brightness
- + Glass cone for optimised illumination

## Staro 2



### ADDITIONAL FEATURES

- + LED light source with fused F.O. cable
- + High number of pixels on cameras require more light from light source to give optimum 4K image
- + Staro 2 LED light source gives intensity higher than 300w Xenon bulb & generate substantial less heat
- + Equipped with FOC sensor, thermal cut off
- + Colour temperature - Just right to match Akino 4K Camera & Monitors
- + Rotating turret adds to the flexibility to adapt different makes of cable
- + Unique small scope mode which reduces heating of Endoscopes - Ideal for Sinuscopy & Arthroscopy

## Medical Grade HD Recorder



### ADDITIONAL FEATURES

- + Full HD recording
- + Internal HDD - 500 GB
- + Network transfer of images
- + Additional USB capture
- + Built in LCD monitor
- + Patient data entry & search



**Akino Medical Pte Ltd**

[www.akinomedical.com](http://www.akinomedical.com)

**JAPAN:** 

Level 9 Ariake Frontier Building,  
Tower B 3-7-26 Ariake, Koto-ku,  
Tokyo 135-0063, Japan  
Tel: +81 35530 8429  
Email: [info.jp@akinomedical.com](mailto:info.jp@akinomedical.com)

**SINGAPORE:** 

362, Uppar Paya Lebar Road,  
#04-09, Da Jin Factory building,  
Singapore - 534963  
Tel: +65 68087810  
Email: [info.sg@akinomedical.com](mailto:info.sg@akinomedical.com)

**AKINO NEAREST REPRESENTATIVE**